

ROMANTIC GEOGRAPHY  
*THE IMPRINT OF PLACE*

# ROMANTIC GEOGRAPHY

## *THE IMPRINT OF PLACE*

A QUASI-MANIFESTO

AND STUDY OF TEMPELHOF FELD, BERLIN

WORDS AND PHOTOGRAPHS BY MORVERN ODLING  
WITH EXCERPTS FROM THE PHILOSOPHY  
OF THE ROMANTIC GEOGRAPHIC SOCIETY

### **ROMANTICISM** /RƏ(ʊ)'MANTɪsɪz(ə)m/

A MOVEMENT IN THE ARTS AND LITERATURE WHICH ORIGINATED IN THE LATE 18TH CENTURY,  
EMPHASIZING INSPIRATION, SUBJECTIVITY, AND THE PRIMACY OF THE INDIVIDUAL.

### **GEOGRAPHY** /Dʒɪ'ɒɡRəʃi/

THE STUDY OF THE PHYSICAL FEATURES OF THE EARTH AND ITS ATMOSPHERE,  
AND OF HUMAN ACTIVITY AS IT AFFECTS AND IS AFFECTED BY THESE.

*THE OXFORD ENGLISH DICTIONARY*



HOLD

FOR



# DESIRE LANDS

IN THIS PLACE WE  
CAN BE OUR BEST SELVES











UNDERSTANDING IS NOT SIMPLY  
AN INTELLECTUAL  
BUT ALSO AN EMOTIONAL EXPERIENCE











IN (TUITION)

THE INFLUENCE OF EMOTIONS AKIN  
TO RELIGIOUS FEELINGS  
OR THE STATE OF MIND WHEN  
FALLING IN LOVE











## THE BREVITY OF SENSATION

LAND YIELDS TO US FOR  
ONLY SO LONG,  
BEYOND THE PRESENT WE ARE  
BUT TEMPORARY







WHEN NECESSARY,  
ANY SUBJECT WHATSOEVER  
IS WORTH SANCTIFYING



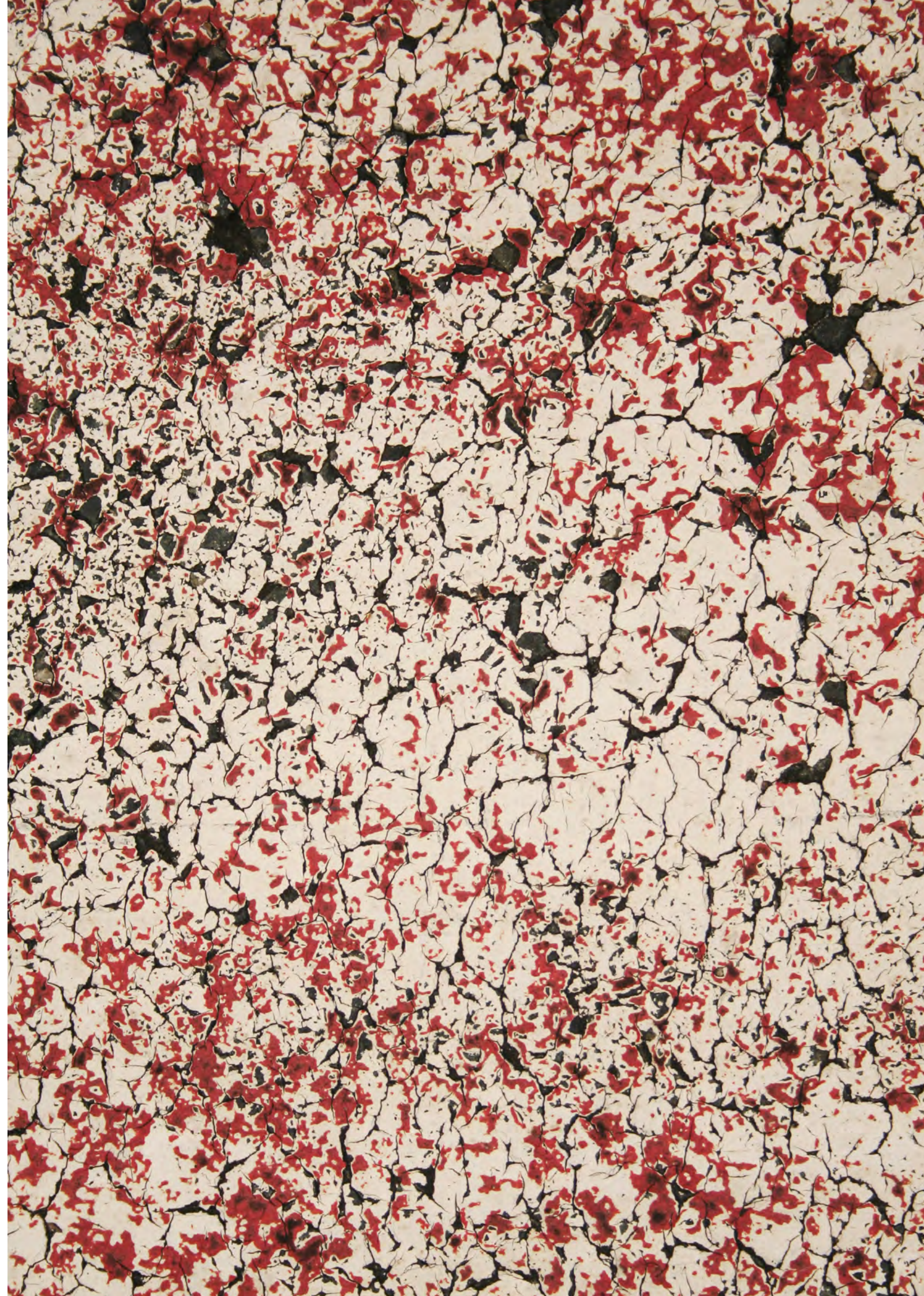






NOTHING IS UNNATURAL TO US

(NATURAL SUPERNATURALISM)











ENVIRONMENT SHOULD BE STUDIED  
NOT MERELY OBJECTIVELY  
BUT RATHER IN RELATION  
TO THE OBSERVERS THEMSELVES







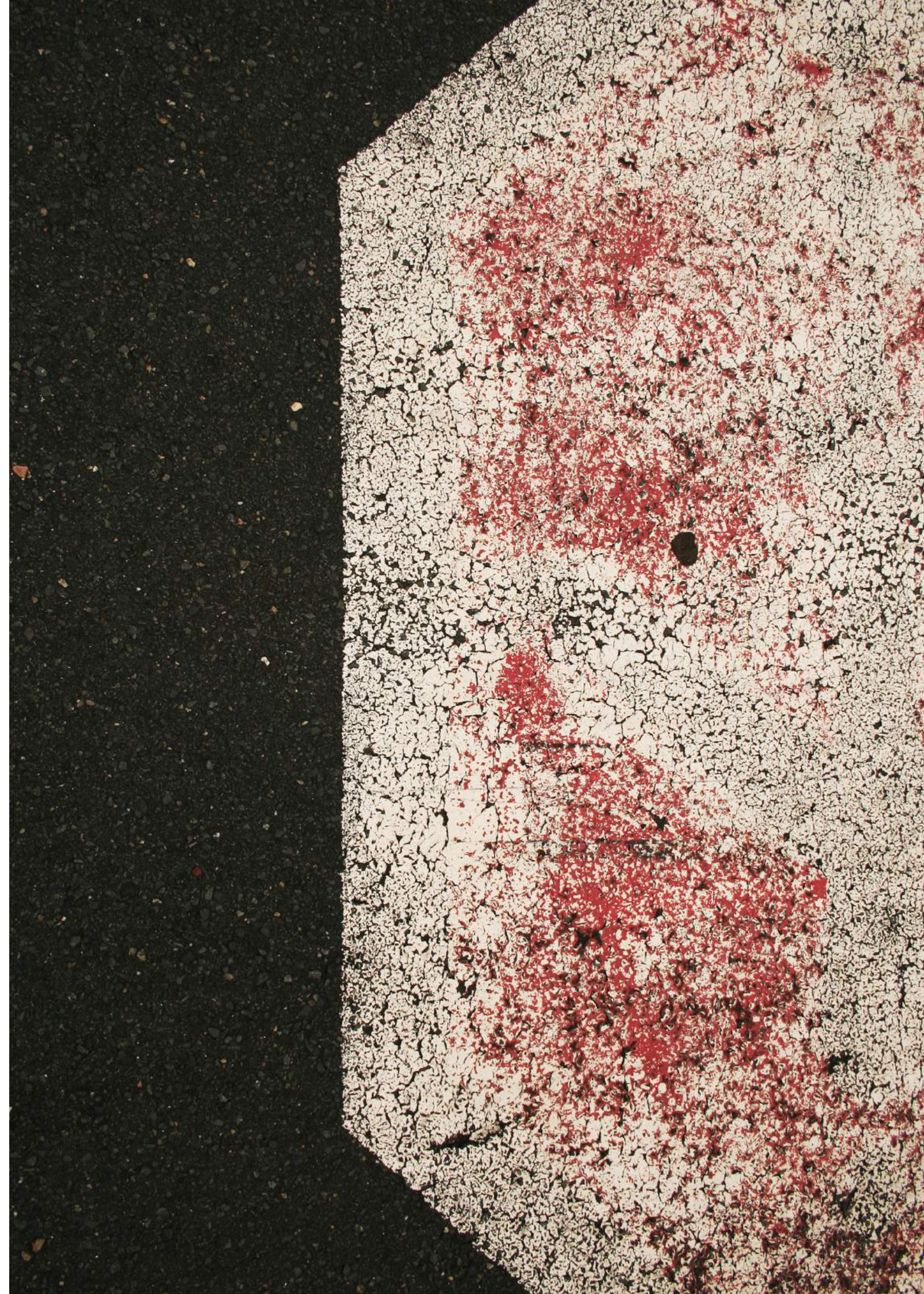








ALL POINTS OF TIME  
ARE EQUALLY REAL;  
THIS REALITY IS UNDETERMINABLE  
BUT DIRECTLY OBSERVABLE  
BY THE SENSES











BE IN (G)

BY THE MARK WE MAKE ON THE LAND,  
WE ARE







ETERNALISM

(THE LAND DOES NOT REMEMBER)













THE SENSORY WORLD  
OF DIRECT EXPERIENCES  
SHOULD NOT BE ABANDONED









WE ARE EVERYWHERE, HERE



